

Connecting to nature - Systemic thinking



Ulla Myllyniemi





**Think about the Earth in space.
Then, think if you could hold it
in your hand.**



Pictures: Pixabay, photo: SYKLI

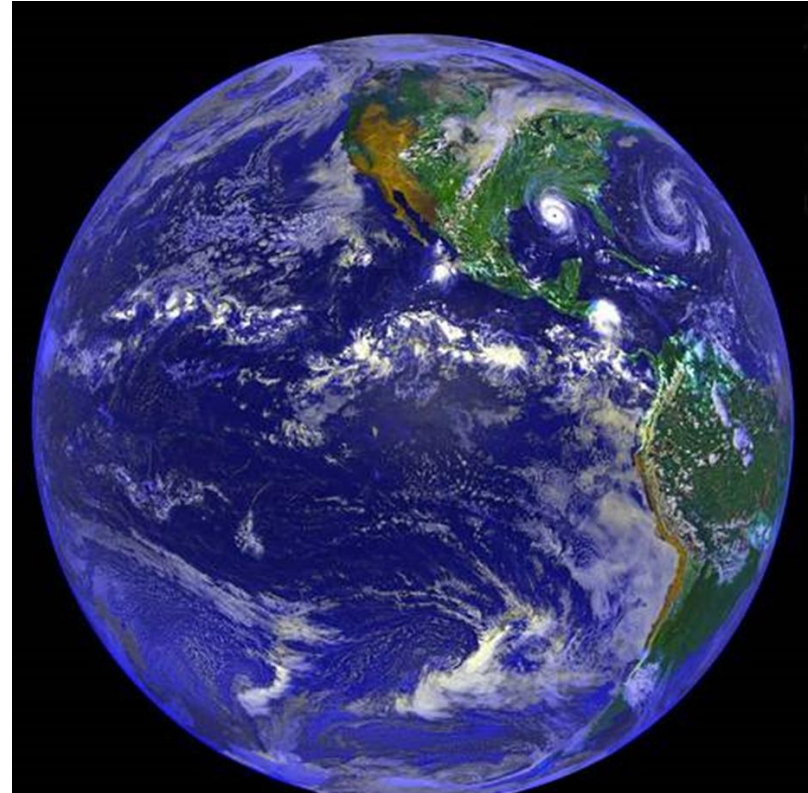


What do the Earth and a spaceship have in common?



Reference: M. Paulsen, Outdoor Environmental Education in the Anthropocene: Beyond In/Out, 2023

Pictures: Pixabay

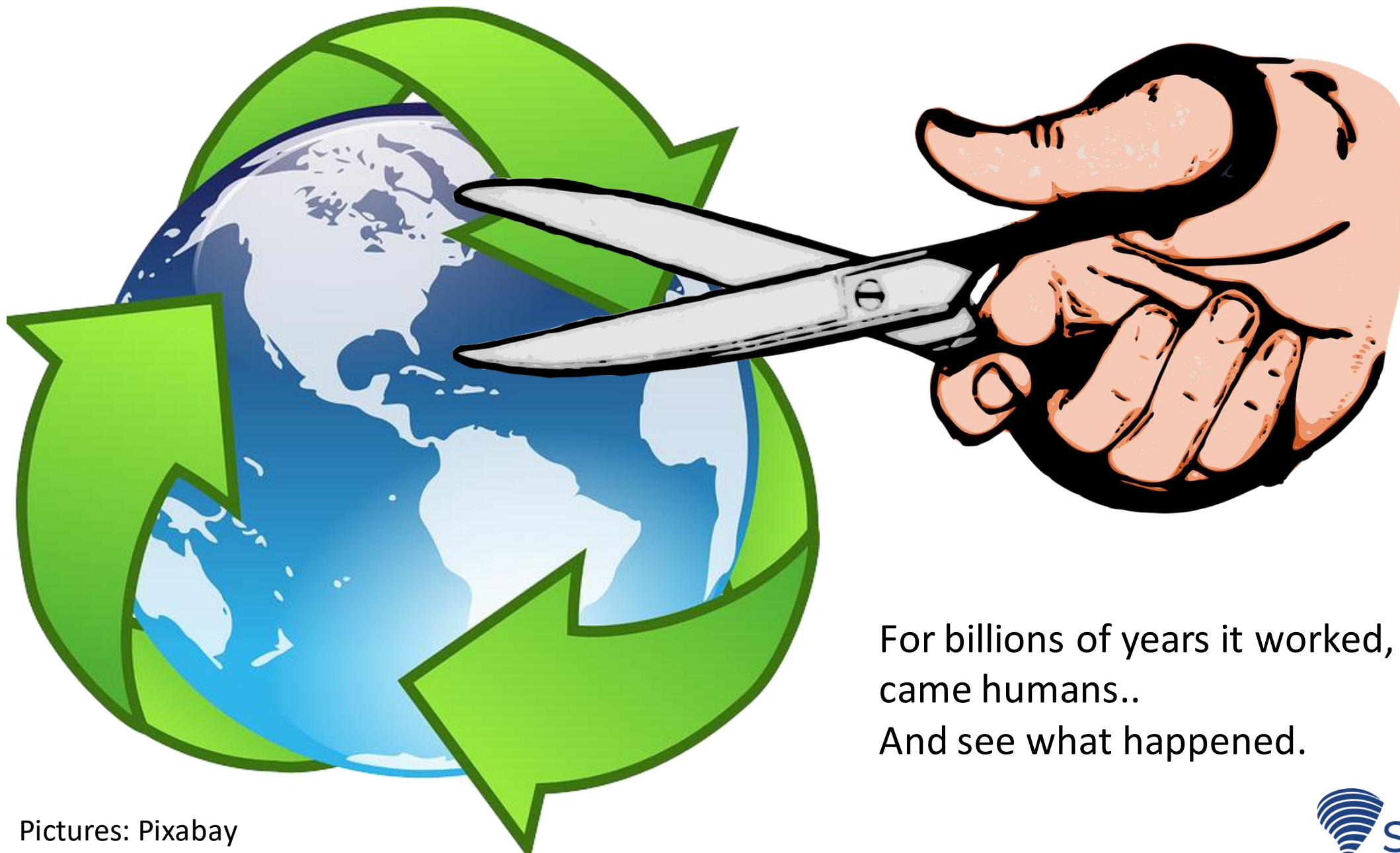


Everything circles here on Earth:

- **Water**
- **Air**
- **Nutrients**
- **Life**
- **Even rocks...**



Picture: Pixabay



For billions of years it worked, but then
came humans..
And see what happened.

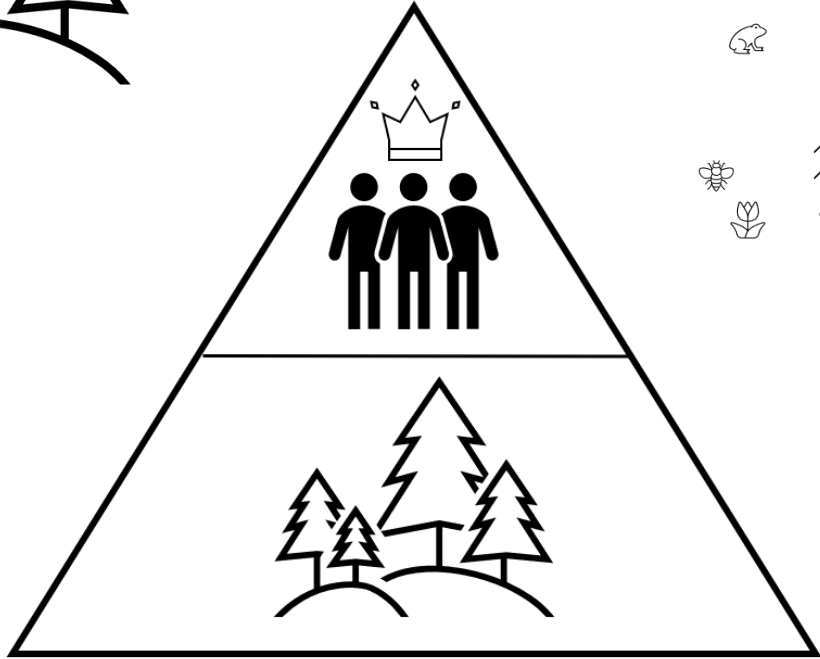
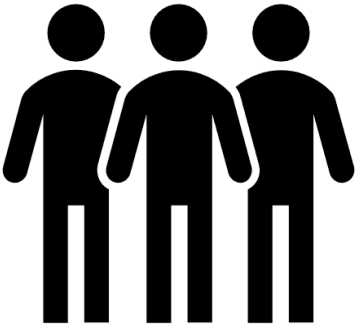


When nature's cycles work

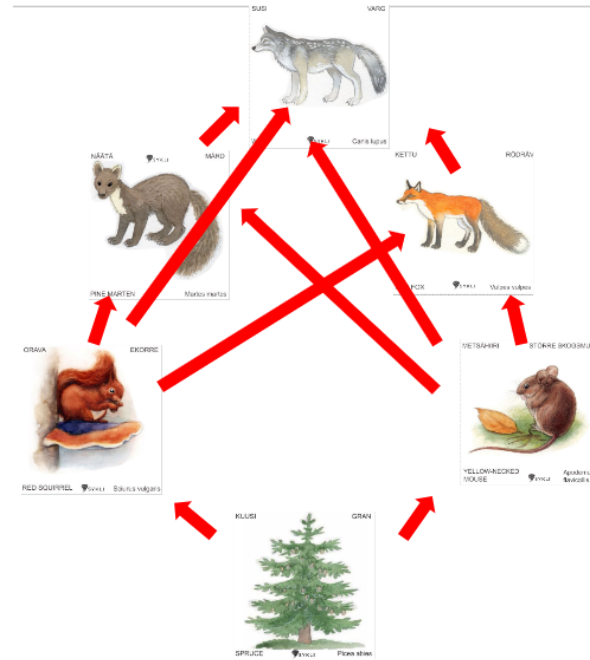


And this happens when it doesn't

What kind of a relationship do you have with nature?



From food chain to food web to ecosystem



Questions of biodiversity and what ifs.

Changes: What if I take this away? Everything affects everything



Choose one nature object from the surrounding nature

KUUSI



GRAN



SPRUCE

Picea abies

NAAVA



SKÄGGLAVA



OLD MAN'S BEARD

Usnea

SINITIAINEN



BLÄMES



EURASIAN
BLUE TIT

Cyanistes caeruleus

SAMMALOITUNUT
MAAPUU

MOSSTÄCKT
LÄGA



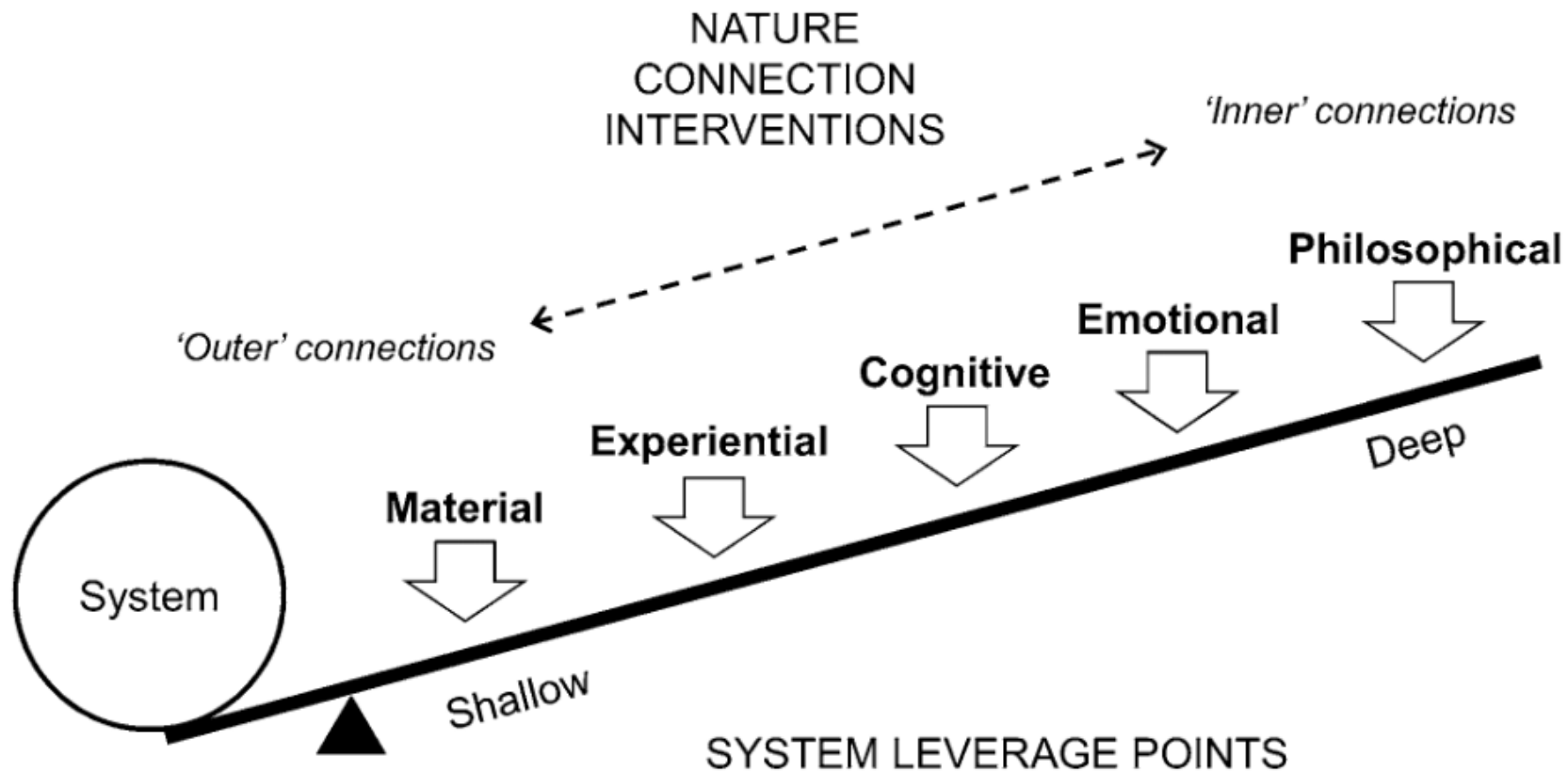
MOSSCOVERED COARSE WOODY BEDRIS

- What kind of life circle it has?
- In what other circles it is connected to?
- What is it's place in food web/ecosystem?
- Has a mankind affected it's being/life? How?
- Has it suffered from climate change / biodiversity loss?

Reconnecting to nature with sustainability

Ives, C.D., Abson, D.J., von Wehrden, H. *et al.* Reconnecting with nature for sustainability. *Sustain Sci* 13, 1389–1397 (2018).

<https://link.springer.com/article/10.1007/s11625-018-0542-9>



Thank you!

